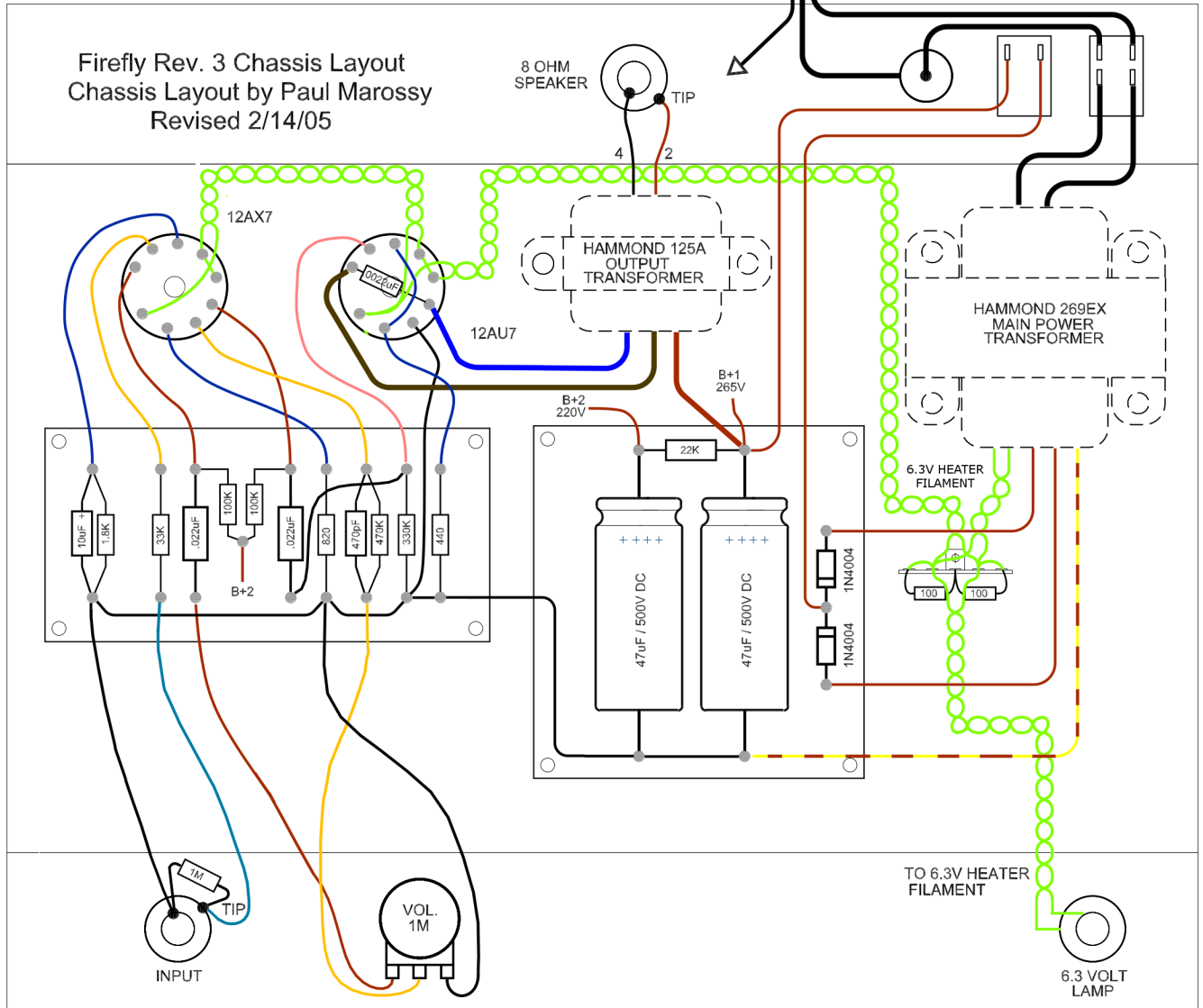


No boost modification - Stephen Keller



Note: non-isolated input jack provides circuit ground.

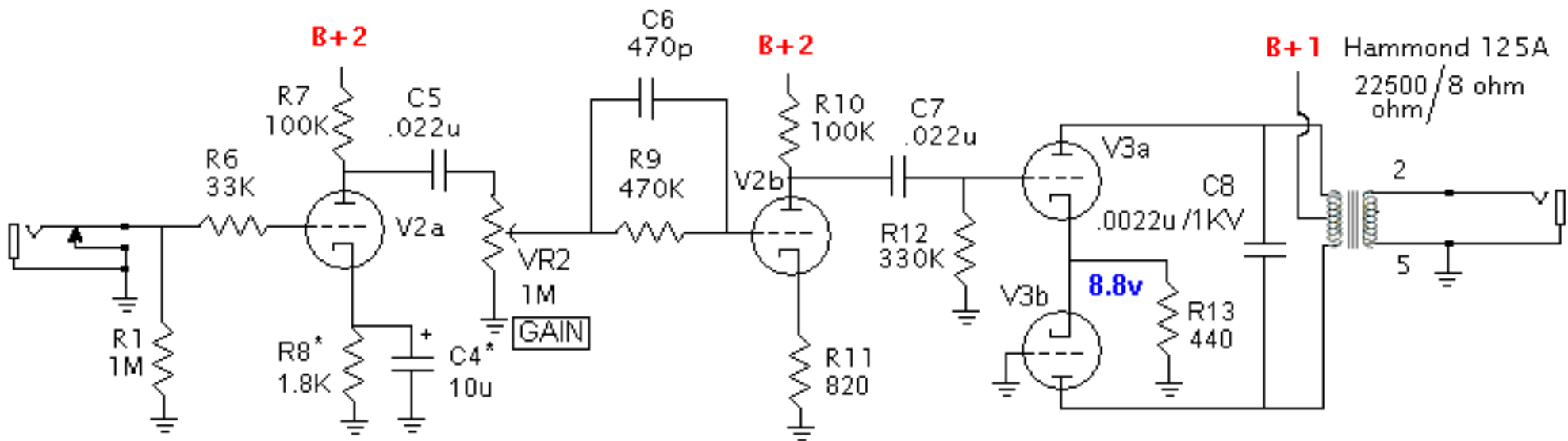
FireFly Rev. 3

12au7 self-split output stage

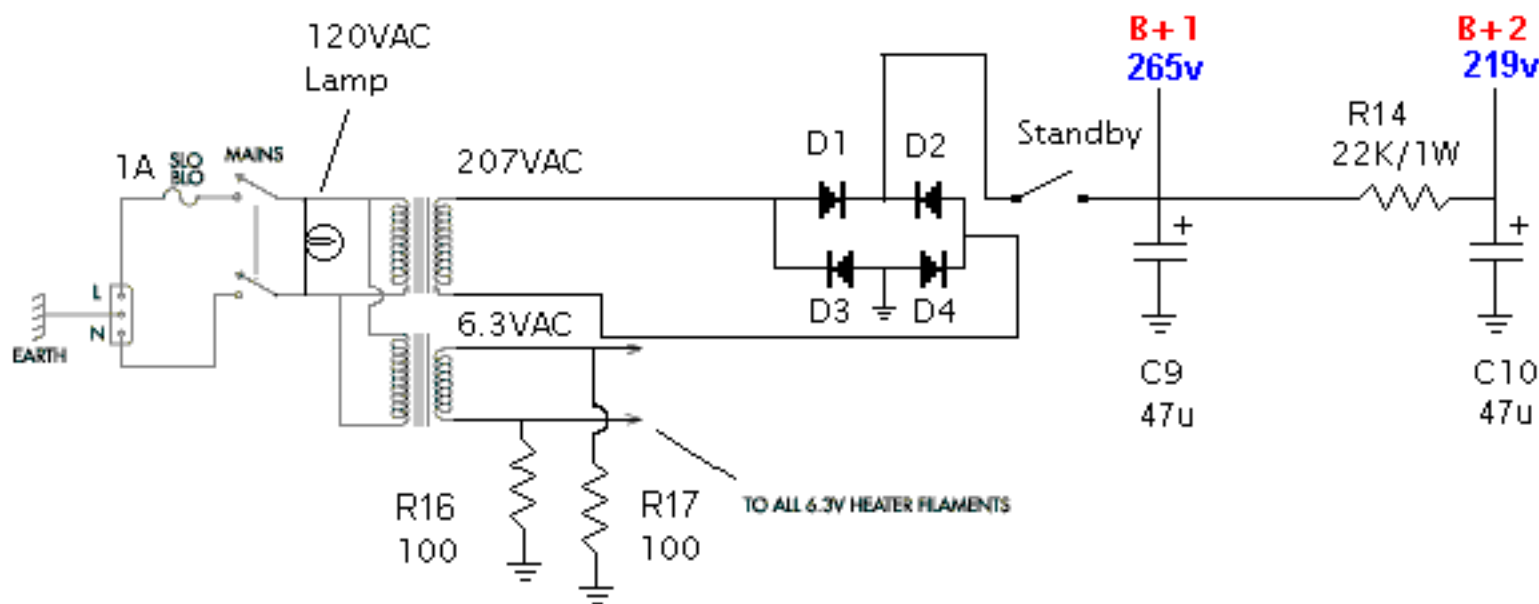
Switchable cascode boost stage for more gain, harmonics, and compression.

Doug Hammond © 2003

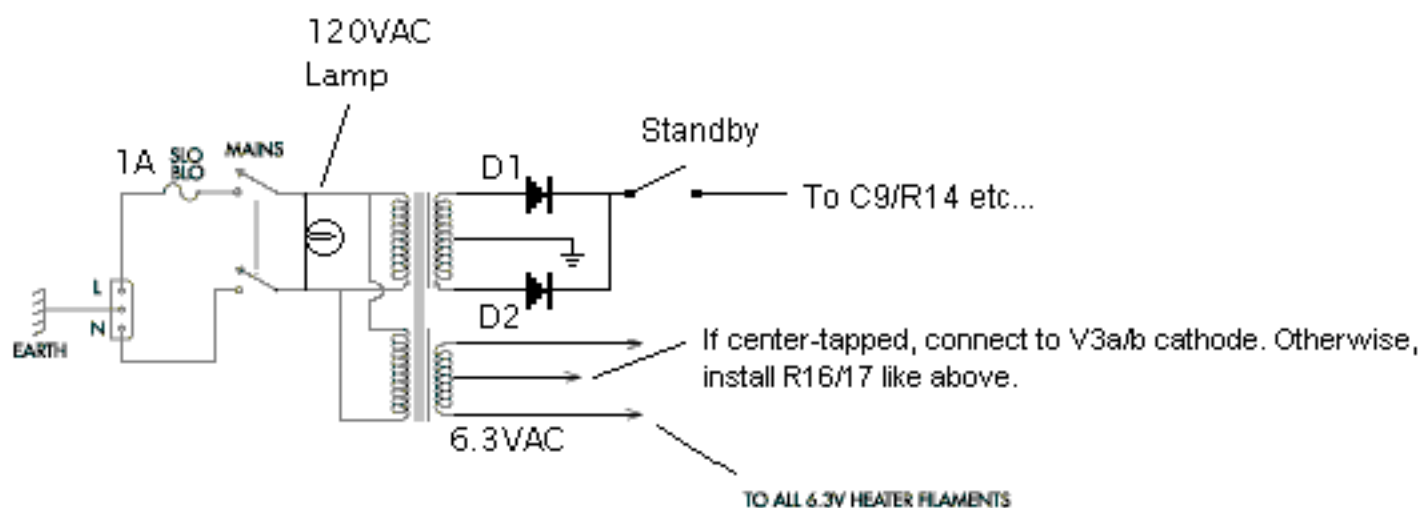
No-boost modification by Stephen Keller 2012



Power supply wiring using non center-tapped isolation transformer and separate filament transformer:



Power supply wiring using center-tapped 190-0-190 power/filament transformer such as Hammond 269EX:



D1-D4: 1N4007
V1, V2: 12AX7
V3: 12AU7

All resistors 1/2 Watt unless otherwise noted.
Use 400V caps just to be safe.

* R8/C4 tweaked for fuller bass and smoother highs compared to Rev. 2.

Thanks to Niek for the inspiration!